

Bantam Lake Current Conditions & Solutions

Presented By:
Dominic Meringolo - Project
Manager/Senior
Environmental Engineer

SOLITUDE
LAKE MANAGEMENT

Restoring Balance. Enhancing Beauty.

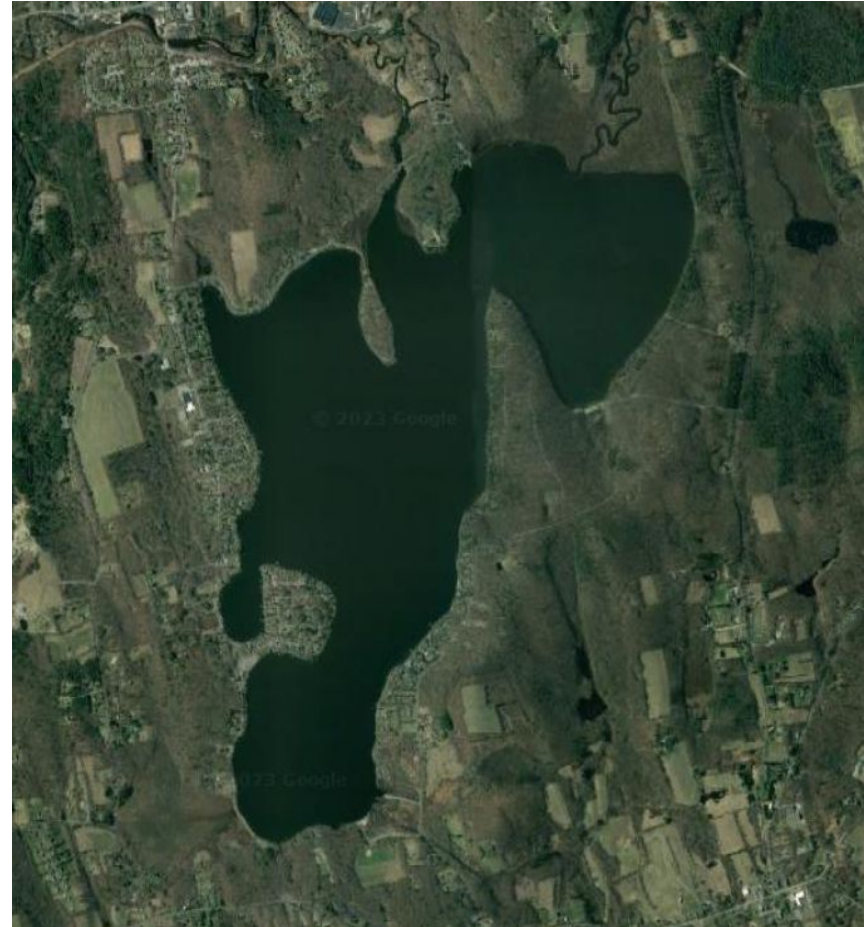


**Bantam Lake Protective Association
Annual Meeting - June 24, 2023**





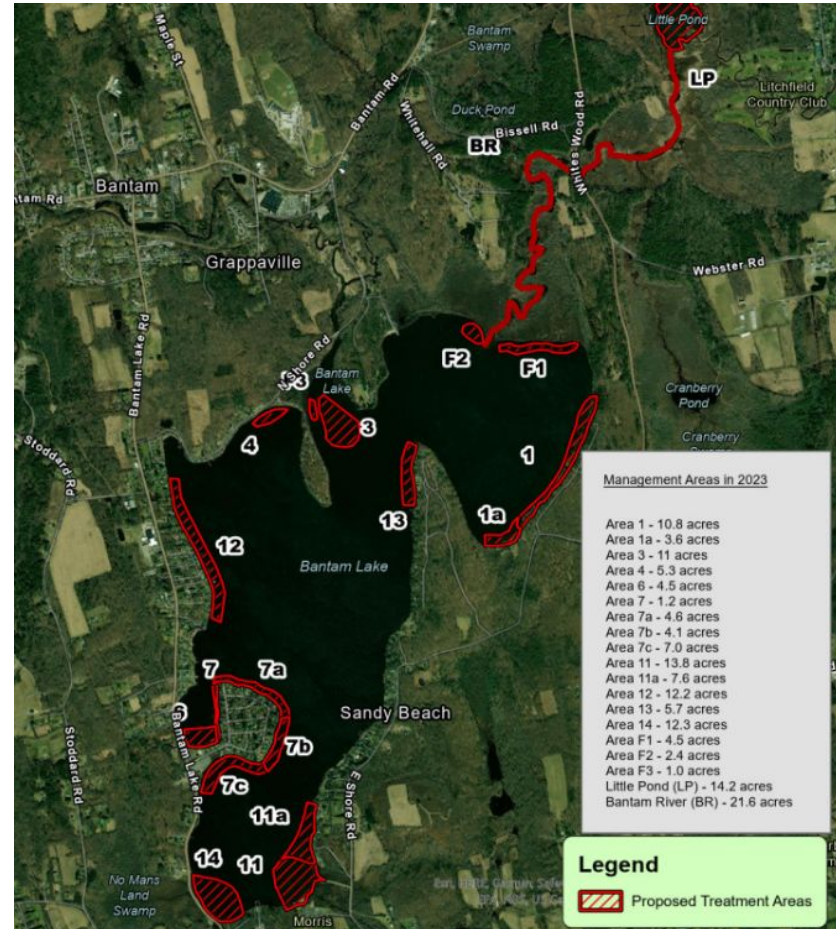
- **Non-Native & Nuisance Weed Growth**
 - Plant Monitoring
 - Treatment Program
- **Cyanobacteria Blooms**
 - Algae Monitoring
 - Algaecide Treatment
 - Watershed Management
 - Alum Treatment



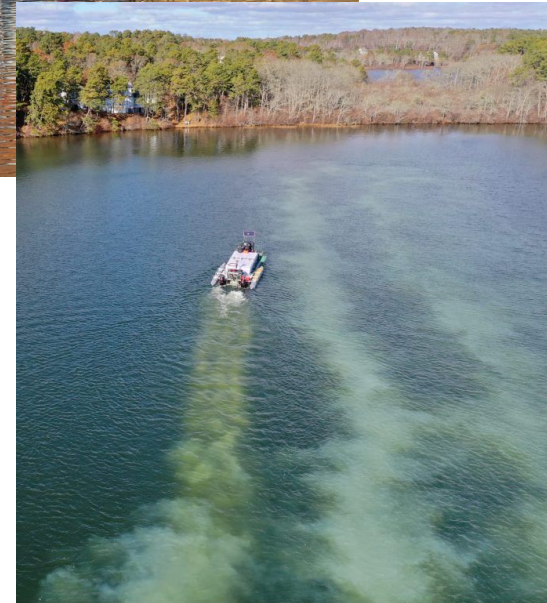
Bantam Lake - Weed Control Program



- **Permitting**
- **Plant Surveys**
 - **Non-native & nuisance plants (3x/year)**
 - **Rare plants (as required)**
- **Targeted Herbicide Treatments**



- Cyanobacteria blooms are caused by excess nutrients, specifically phosphorus
- Phosphorus enters the water both from the watershed (external) and from the lake sediments (internal)
- Alum treatment is a proven method of significantly reducing internal loading with a long history of success in New England and throughout the country





Bantam Lake - Alum Treatment

