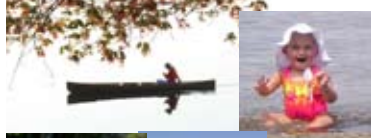




## WHAT IF?

The South Bay was now a swamp?  
The north shoreline was inaccessible for swimming and boating?  
There was no Bantam Lake Ski Club or Yacht Club?  
There were no swimming lessons at Sandy Beach and no camp at Morris Town Beach?



The boats launches were unusable due to overgrowth of weeds?  
The Bantam River was an unnavigable marsh?  
There were almost no fish?



Concerned? We are, and you should be, too. Many of these possibilities might have become realities had it not been for the efforts of the BLPA, in conjunction with the DEP, the White Memorial Foundation, the towns of Morris and Litchfield and the financial support of our membership.

Look at the pictures. Do you see yourself enjoying any of these activities? Please join us to help to keep the lake alive and healthy. It belongs to all of us and is our privilege and responsibility. Our membership form is attached and can now also be completed online and paid via paypal, or printed and mailed with an old-fashioned check.

For more information regarding the efforts of the BLPA in its endeavors to protect Bantam Lake, please read on or check out our website at [www.bantamlakect.com](http://www.bantamlakect.com).

**Spring Fundraiser**  
 Mark your calendars for June 11th at the Bantam Fire House from 4pm - 7pm. There will be wine and beer tasting, food, music and some big-ticket raffle items. If anyone has raffle items for donation such as weekend getaways, restaurant gift certificates or ball game tickets, please contact Debbie Shurberg at 567-3829 or [dashurberg@optonline.net](mailto:dashurberg@optonline.net). If anyone would like to volunteer some time to serve on the committee please email the BLPA or any board member. This is our most important fundraiser.

## 2010 Fanwort Removal Project

In January 2010, after three preliminary meetings in Hartford, members of the BLPA board of directors met with the DEP, the Bantam Lake Authority, White Memorial Foundation and Dr. George Knoecklein (our resident Limnologist i.e. "lake doctor", for the past several years) to finalize the implementation plans of the \$78,000 grant awarded by the State of CT DEP to the BLPA. This money was designated for the removal of the highly invasive fanwort weed. The meeting was very productive with all parties agreeing that the issue at hand poses serious risks to the future of our lake, the Bantam River and White Memorial properties. The DEP has been most cooperative and has indicated a high level of motivation to assist with this project.

In 2009, just over half an acre of fanwort plants were suctioned up from the outside of the Bantam River outlet and inlet areas along with a patch on the east side of Point Folly. Initial 2010 surveys indicated that the 2009 harvesting was successful. We were very pleased as surveys performed early this summer found only a few handfuls of the plants remained in the areas treated in 2009. And, literally, they were hand-pulled.

### 2011 New Years resolution: 100 % membership

Our goal for next year is to get every lakeshore owner and recreational user to become a BLPA member. There are some big issues still facing our lake and we need everyone's voice. Dues are still only \$25.00 per year, but every dollar helps. Please check the roster on the website (under membership) and see if your friends and neighbors are on the list. If not, we hope you will encourage them to join, or buy them a membership - what a considerate holiday gift!

This summer, over 900 man-hours were spent by two different, qualified contractors suction harvesting fanwort from the north end of the lake and the mouth of the Bantam River inlet. This year's harvest was far more bountiful than last year's. Approximately 300,000 pounds (equating to about 6 acres) of the nasty predator were sucked out, bagged up and hauled off. The job was arduous and oh, so expensive. Over \$90,000 was spent on removal costs this year. BUT, it seems to be working.... And, we can proudly say (keep your fingers crossed....) there is no fanwort in Bantam Lake! As for the Bantam River - now that is a different story. *(cont'd pg 2)*

## Board of Directors

Constance Trolle, *President*

Lance Loomis, *VP*

Peter Longo, *Treasurer*

Deborah Shurberg, *Recording Secretary*

Kathy Hill, *Secretary/Website/Newsletter*

Aaron Devaux

Michael Dunn

Margaret French

David Geremia

Michael Lauretano, Sr. (*alternate*)

Charles Marshall

Tod Saulnier (*alternate*)

Kendell Shailer

Jason Travelstead

## Campfires

It's almost ice season and time to go out and enjoy some great winter activities. Please use care when burning fires on or near the lake. Remember, it's illegal to burn fires on or around the lake unless they are contained in fireproof vessels and the remains are removed after use. Ashes and fire remains eventually find their way into the water harming the environment. Unlike years past, this year several local agencies have vowed to enforce fines for violations.



## Fall Plant Sale

Our fall plant sale was another great success this year. Several BLPA board members and their families spent a good part of their weekend peddling mums, asters and other seasonal flowers. The event raised over \$1300.



## Welcome New Board Members

We are pleased to announce the addition of several new members to our Board of Directors. We welcome Ken Shailer and Jason Travelstead. We also welcome Mike Lauretano, Sr. and Tod Saulnier, who will be serving as alternate board members. John Noonan and Joel Rathbun have stepped down due to time restrictions. Thanks to both of you for your service and continued support. All are welcome to attend our meetings, which are held every third Thursday at the Morris Town Hall at 7 pm.

## Jamb System

The Town of Litchfield was recently awarded a STEAP grant for the purpose of reconstructing the jamb system on the Bantam River. The funds will be used to design and construct a dam at the abandoned railroad abutment near the existing jams. Stay tuned for more information.

email us: [bantamlakehelp@optonline.net](mailto:bantamlakehelp@optonline.net)

## Milfoil Update

Gerry Smith of Aquatic Control Technologies reports that the areas of Eurasian water-milfoil needing herbicide treatment were less this year at about 29 acres as compared to 41 acres in 2009. The cost of these studies, chemical treatments, and water testing all come from the BLPA Coalition Fund. Accordingly, costs were lower this year than last. There is good evidence to support the fact that the water-milfoil has declined substantially because the management program is working, and, hopefully, containing the spread of milfoil and long leafed pondweed throughout the lake. Although the native naiad weed reared its ugly head again in July, we were able to tame it in the DEP designated areas with the second chemical treatment this summer.



Eurasian water-milfoil

## The Morris Boat Launch

The Town of Morris First Selectmen's Office has recently appointed a board to examine and find solutions regarding the use of the Morris town boat launch. Although BLPA is not involved with this board, nor does it have any input into this matter, we will attempt to forward any new information regarding the situation to our membership. Any questions or comments regarding the launch should be directed to the Morris town offices.

## Weed Watcher Program - All hands on deck!

Although we have made great strides towards the removal of fanwort from the north end of the lake, it is imperative that we remain vigilant for any new populations. Fanwort is highly prolific and can easily migrate as fragments that float away take root and spread to new locations. We are particularly susceptible to this while harvesting takes place. Please be vigilant as you look for plants. They are easily confused with milfoil but can be differentiated by the following comparisons (also see line diagrams)

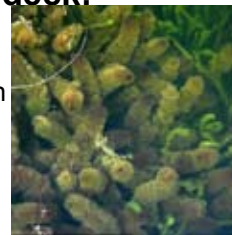


Photo of Fanwort

**Fanwort:** Artificial looking bright green color

Leaves: Small tendrils grow off the main stem with opposing round "fan like" leaves.

Stems: Rooted with gelatinous, slimy stems.

Flowers: July–September. Tiny white to pinkish white along with small lily like pads at the water surface.

**Eurasian water-milfoil:**

Leaves – Grey greenish. Single strands emerge directly off main stem.

Feather-like leaves grow in whorls of 4 around the stem or are alternately arranged around the stem with each leaf divided into 12 or more pairs of thin thread-like leaflets.

Stems: Multi branched. Reddish or brownish color at the tops of the plants.

Flowers: July-August. Yellow or reddish occur on leafless spikes above the water surface.



Eurasian water-milfoil



Cabomba caroliniana Fanwort

## 2010 Fanwort Eradication Project (cont'd from pg 1)

In 2011, we hope to start at Little Pond, which is 11.8 acres and choked with fanwort. We will then work our way toward the lake (about 2.2 miles). Additional methods of removal such as bottom barrier weed mats were employed this year, on a trial basis, without much luck. We will continue to search for other less expensive processes. Once again, we can reiterate that great progress has been made; however, the Bantam River is nearly eight miles long with the highly invasive fanwort found as far north as Timber Lake.

The Bantam River will remain an ongoing project for the next several years. We will continue to monitor the lake and initiate a hunt-and-pick method for any lingering fanwort plants, and seek out grant money where available. We are most grateful to our membership, the Town of Morris and the White Memorial Foundation for their continued support, and we are hopeful that the Town of Litchfield will re-consider its decision to withdraw funding for the BLPA Weed Coalition. A final report is being compiled for the DEP, which will be posted on our website or copies may be obtained by contacting Connie Trolle at 860-567-0254 or [connietrolle@aol.com](mailto:connietrolle@aol.com).